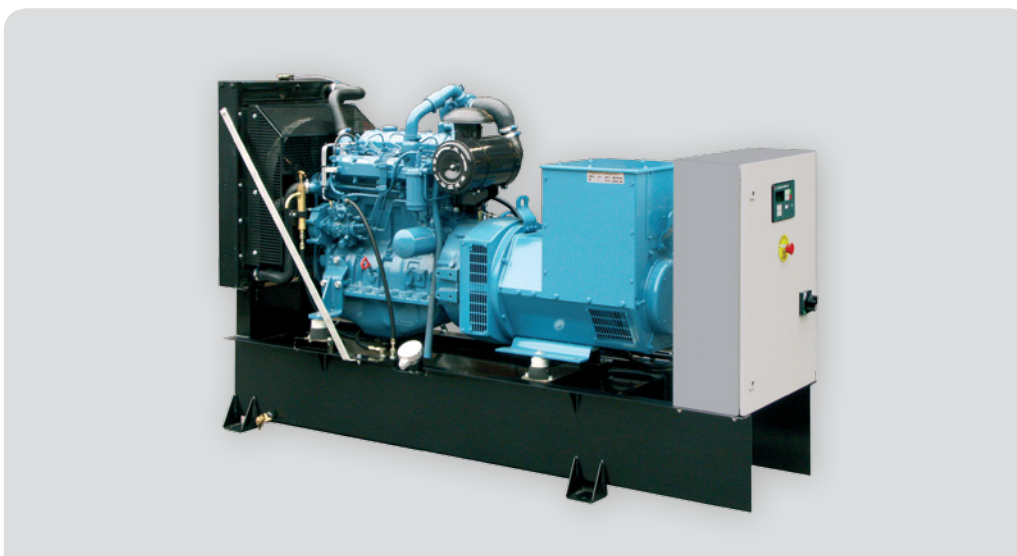


## SD Series

Diesel generating sets for land applications, indoor version



Type	Diesel Model	PRP kVA/kW	LTP kVA/kW	Dimensions mm			Dry Weight kg
				L	W	H	
SD 60	320DSRG	60/48	66/53	1850	750	1500	1000
SD 85	420DSRG	85/68	94/75	2300	750	1500	1100
SD 100	420DSRAG	100/80	110/88	2500	750	1500	1300
SD 130	620DSRG	130/104	143/114	3150	1100	1750	1800
SD 160	620DSRAG	160/128	176/141	3150	1100	1750	1850
SD 200	634DSRAG	200/160	220/176	3150	1150	2000	2000
SD 230	645DSBAG	230/184	253/202	3500	1150	2200	2200

### PRP

Prime Power Rating at 50 Hz, corresponding to ISO 8528 standard for continuous operation at variable load. Overload capability 10 % max. 1 h.

### LTP

Limited Time Power Rating at 50 Hz, corresponding to ISO 8528 standard for standby operation in the event of a main power failure (mains failure). Max. 500 run hours per year. No overload is permitted.

### Base Unit

Refers to the complete standard indoor model generating set, equipped with

- steel base frame with vibration isolators
- cooling radiator with engine driven fan
- fuel oil day tank
- exhaust silencer with high noise reduction capability (25 dBA)
- low-maintenance type battery set for start & control
- manual control panel with main breaker for generator

### AMF+ATS

Additional price, refers to additional equipment needed for automatic standby operation

- Automatic Mains Failure (AMF) control system
- Automatic Transfer Switch (ATS) for transferring the supply from Mains to Generator and back
- thermostat controlled coolant heater
- automatic battery charging unit
- fuel oil low level alarm

## SD Series

Diesel generating sets for land applications, outdoor version



Type	Diesel Model	PRP kVA/kW	LTP kVA/kW	Dimensions mm			Dry Weight kg
				L	W	H	
SD 60	320DSRG	60/48	66/53	2385	1100	1695	1685
SD 85	420DSRG	85/68	94/75	2660	1100	1695	1846
SD 100	420DSRAG	100/80	110/88	2660	1100	1695	1873
SD 130	620DSRG	130/104	143/114	3600	1150	1995	2593
SD 160	620DSRAG	160/128	176/141	3600	1150	1995	2662
SD 200	634DSRAG	200/160	220/176	3600	1150	1995	2797
SD 230	645DSBAG	230/184	253/202	3900	1150	2045	3153

### PRP

Prime Power Rating at 50 Hz, corresponding to ISO 8528 standard for continuous operation at variable load. Overload capability 10 % max. 1 h.

### LTP

Limited Time Power Rating at 50 Hz, corresponding to ISO 8528 standard for standby operation in the event of a main power failure (mains failure). Max. 500 run hours per year. No overload is permitted.

### Base Unit

Refers to the complete standard outdoor model generating set, equipped with

- steel base frame with vibration isolators
- cooling radiator with engine driven fan
- fuel oil day tank
- exhaust silencer with high noise reduction capability (25 dBA)
- low-maintenance type battery set for start & control
- manual control panel with main breaker for generator
- weatherproof canopy

### AMF+ATS

Additional price, refers to additional equipment needed for automatic standby operation

- Automatic Mains Failure (AMF) control system
- Automatic Transfer Switch (ATS) for transferring the supply from Mains to Generator and back
- thermostat controlled coolant heater
- automatic battery charging unit
- fuel oil low level alarm

## SD Series

Diesel generating sets for land applications, container version



Type	Diesel Model	PRP kVA/kW	LTP kVA/kW	Dimensions mm			Dry Weight kg
				L	W	H	
SD 60	320DSRG	60/48	66/53	6058	2438	2591	3350
SD 85	420DSRG	85/68	94/75	6058	2438	2591	3450
SD 100	420DSRAG	100/80	110/88	6058	2438	2591	3660
SD 130	620DSRG	130/104	143/114	6058	2438	2591	4170
SD 160	620DSRAG	160/128	176/141	6058	2438	2591	4220
SD 200	634DSRAG	200/160	220/176	6058	2438	2591	4400
SD 230	645DSBAG	230/184	253/202	6058	2438	2591	4600

### PRP

Prime Power Rating at 50 Hz, corresponding to ISO 8528 standard for continuous operation at variable load. Overload capability 10 % max. 1 h.

### LTP

Limited Time Power Rating at 50 Hz, corresponding to ISO 8528 standard for standby operation in the event of a main power failure (mains failure). Max. 500 run hours per year. No overload is permitted.

### Base Unit

Refers to the complete standard container model generating set, equipped with

- steel base frame with vibration isolators
- cooling radiator with engine driven fan
- fuel oil day tank
- exhaust silencer with high noise reduction capability (25 dBA)
- low-maintenance type battery set for start & control
- manual control panel with main breaker for generator
- installed in weatherproof ISO 20' container

### AMF+ATS

Additional price, refers to additional equipment needed for automatic standby operation

- Automatic Mains Failure (AMF) control system
- Automatic Transfer Switch (ATS) for transferring the supply from Mains to Generator and back
- thermostat controlled coolant heater
- automatic battery charging unit
- fuel oil low level alarm